

LIMA RESIDENCY

Duplex

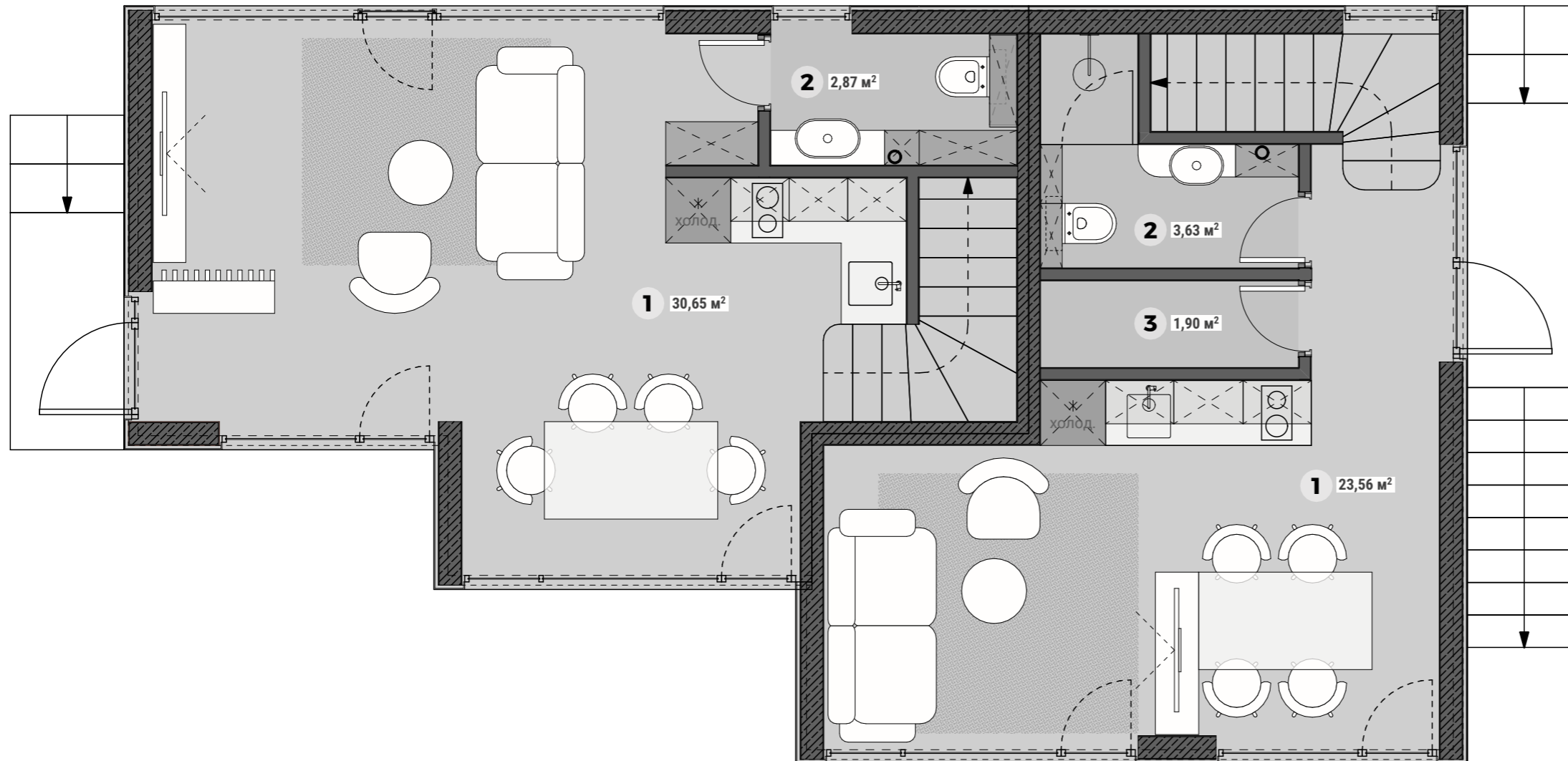
Private Villas complex
in Pererenan area
600m to the beach

www.limaresidency.com





VILLA C FIRST FLOOR



VILLA C1
Lot area: 68,9m²

LEGEND:

- 1 - Living space
- 2 - WC
- 3 - Pantry

VILLA C2
Lot area: 76,8m²

LEGEND:

- 1 - Living space
- 2 - WC

VILLA C SECOND FLOOR

VILLA C1
Lot area: 68,9m²

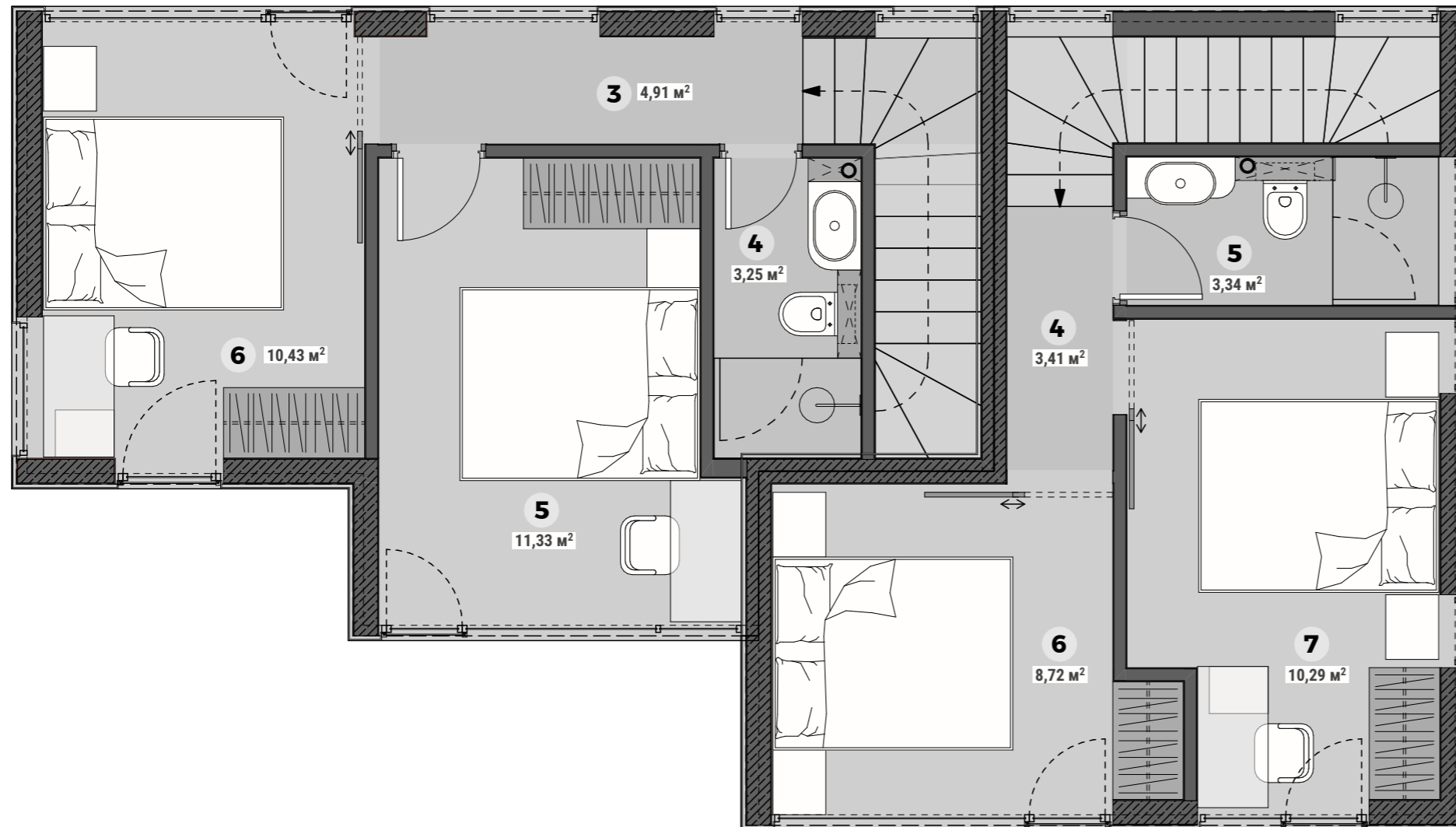
LEGEND:

- 3 - Hall
- 4 - WC
- 5 - Bedroom 1
- 6 - Bedroom 2

VILLA C2
Lot area: 76,8m²

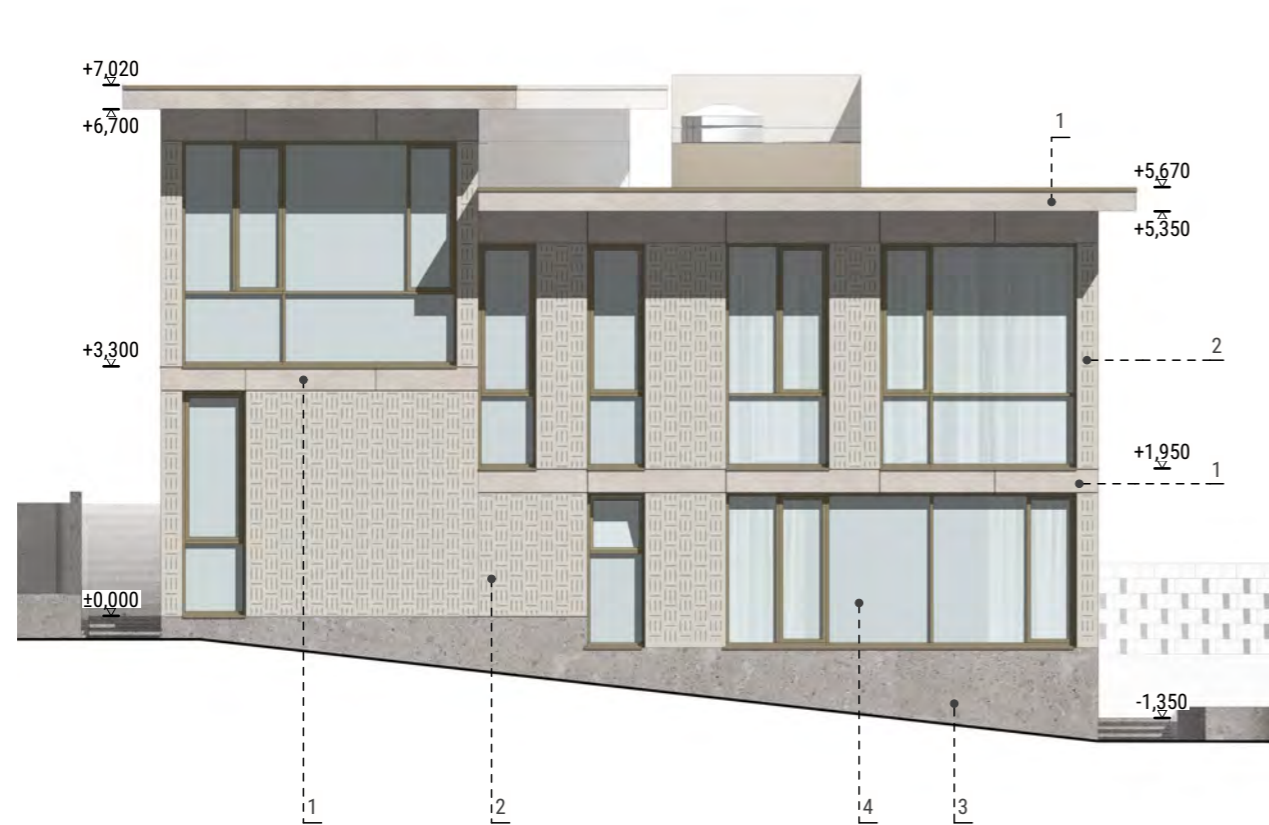
LEGEND:

- 4 - Hall
- 5 - WC
- 6 - Bedroom 1
- 7 - Bedroom 2



VILLA C ELEVATIONS

ELEVATION 1-1



ELEVATION 2-2



Elevations Villa C	
	S (m2)
Facade ceilings	23,75
Facade concrete covering	10,02
Facade panels	112,95
Facade stone covering	32,15
Facade surfaces	278,47
Facade walls	183,89
Facade windows	110,10

1. Stone slabs on anchor support system
2. Aluminum composite panels on supporting system
3. Facade concrete
4. Curtain wall system
5. Wooden facade panels
6. Perforated aluminum composite fencing



RESIDENCY

RESIDENCY