



LIMA RESIDENCY

Apartments

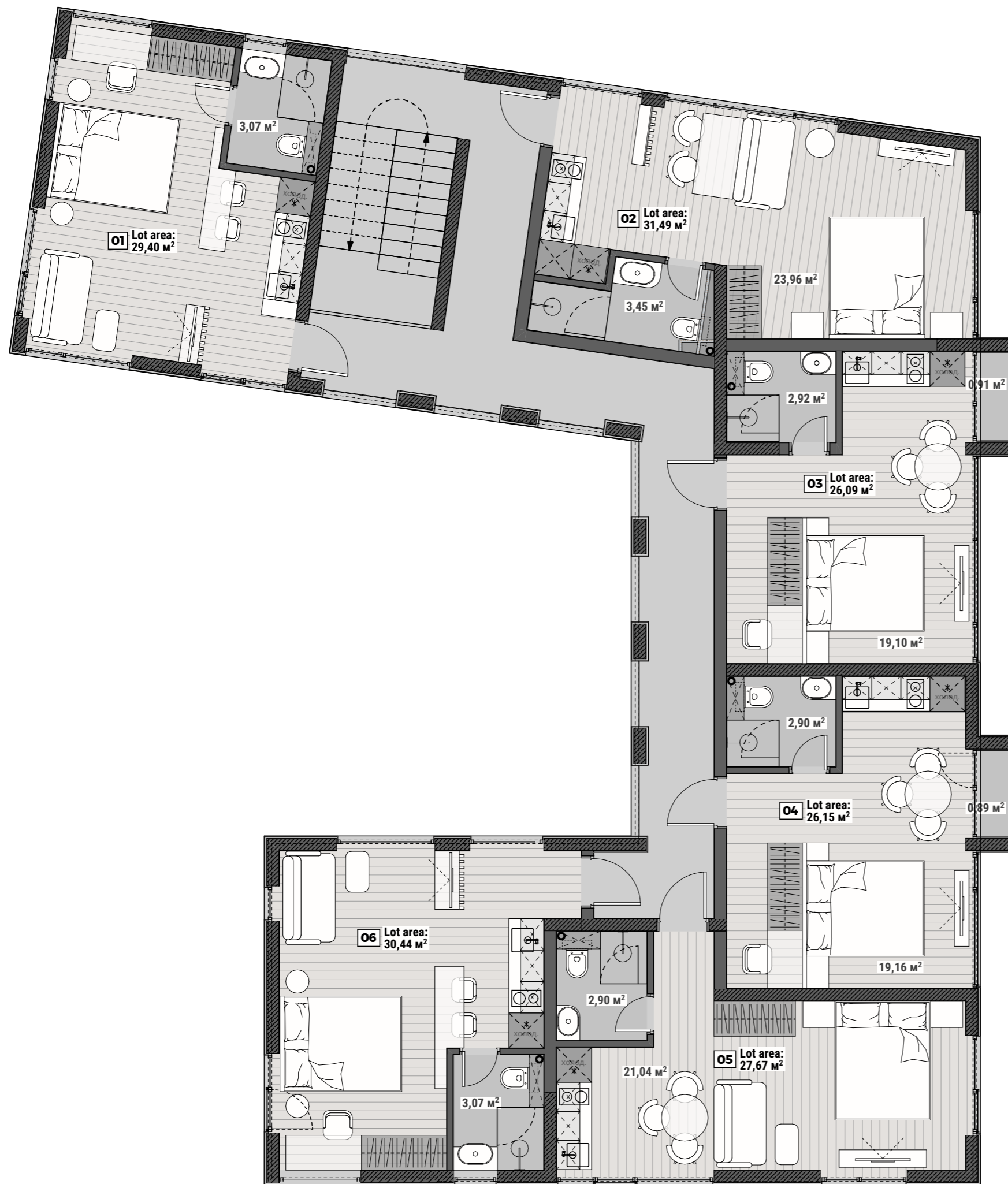
Private Villas complex
in Pererenan area
600m to the beach

www.limaresidency.com





APARTMENTS SECOND FLOOR

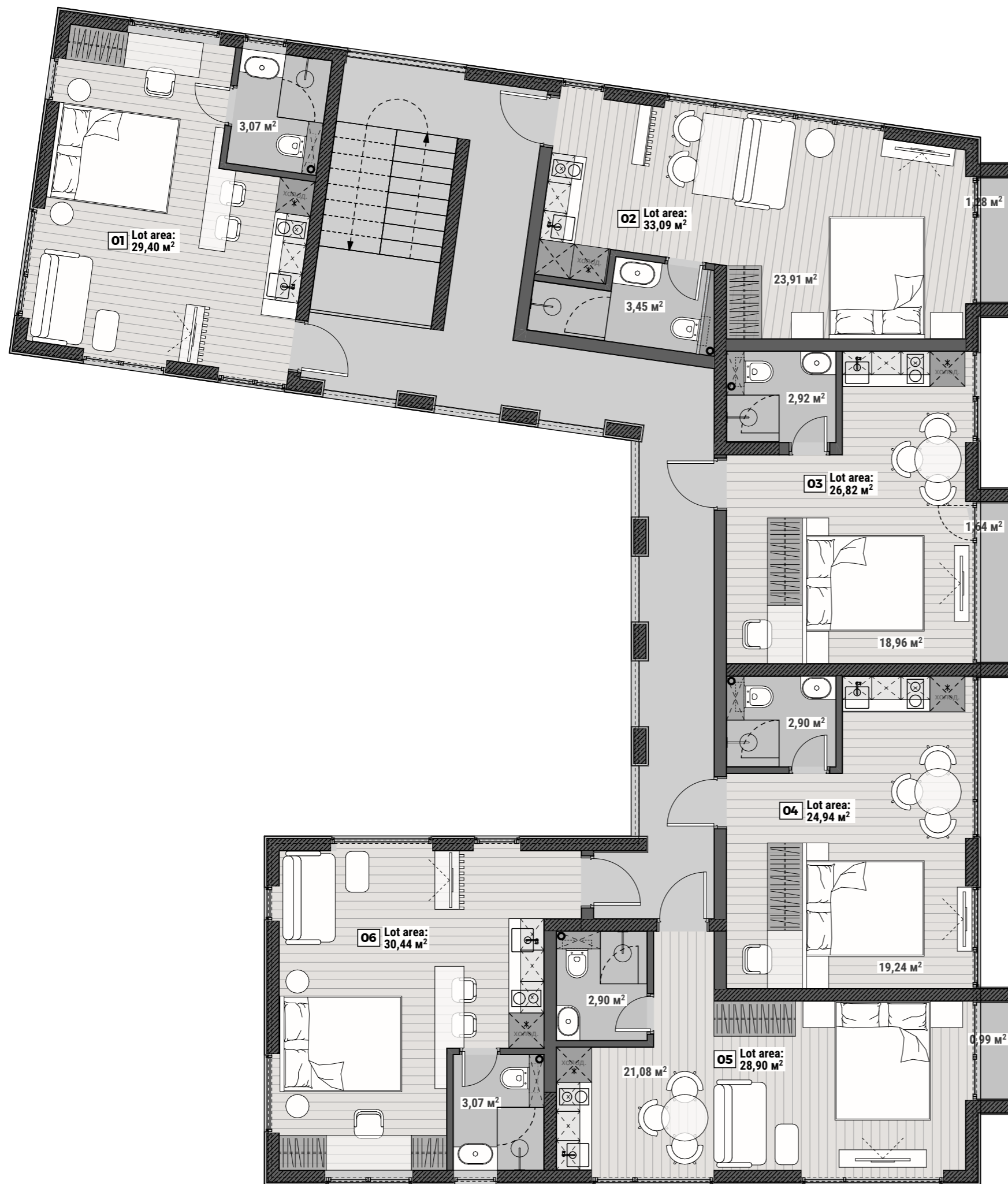


Gross floor area: 212,9m²
Lots area: 171,24m²

LEGEND:

- 01 - Apartments 29,4m²
- 02 - Apartments 31,49m²
- 03 - Apartments 26,09m²
- 04 - Apartments 26,15m²
- 05 - Apartments 27,67m²
- 06 - Apartments 30,44 m²

APARTMENTS THIRD FLOOR



Gross area: 215,4m²
Lots area: 173,6m²

LEGEND:

- 01 - Apartments 29,4m²
- 02 - Apartments 33,09m²
- 03 - Apartments 26,82m²
- 04 - Apartments 24,94m²
- 05 - Apartments 28,90m²
- 06 - Apartments 30,44 m²

APARTMENTS ELEVATION 1-1



Public block Elevations	
	S (m2)
Facade ceilings	42,09
Facade concrete covering	22,99
Facade fencing perforated panels	89,07
Facade panels	237,71
Facade shutters	31,60
Facade stone covering	250,95
Facade surfaces	1182,19
Facade walls	574,05
Facade windows	364,14
Facade wood panels	68,84

1. Stone slabs on anchor support system
2. Aluminum composite panels on supporting system
3. Facade concrete
4. Curtain wall system
5. Wooden facade panels
6. Perforated aluminum composite fencing

APARTMENTS ELEVATION 2-2



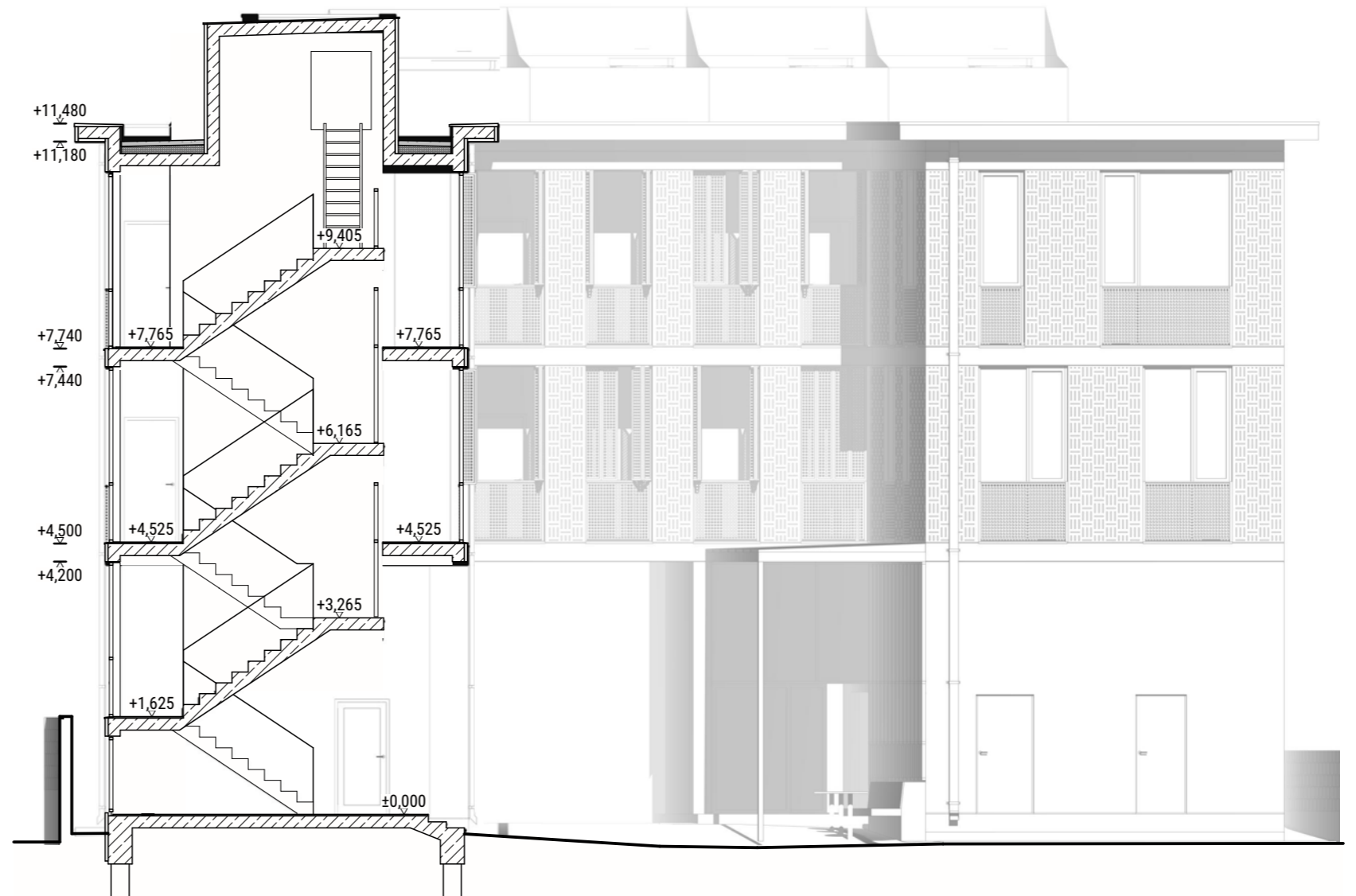
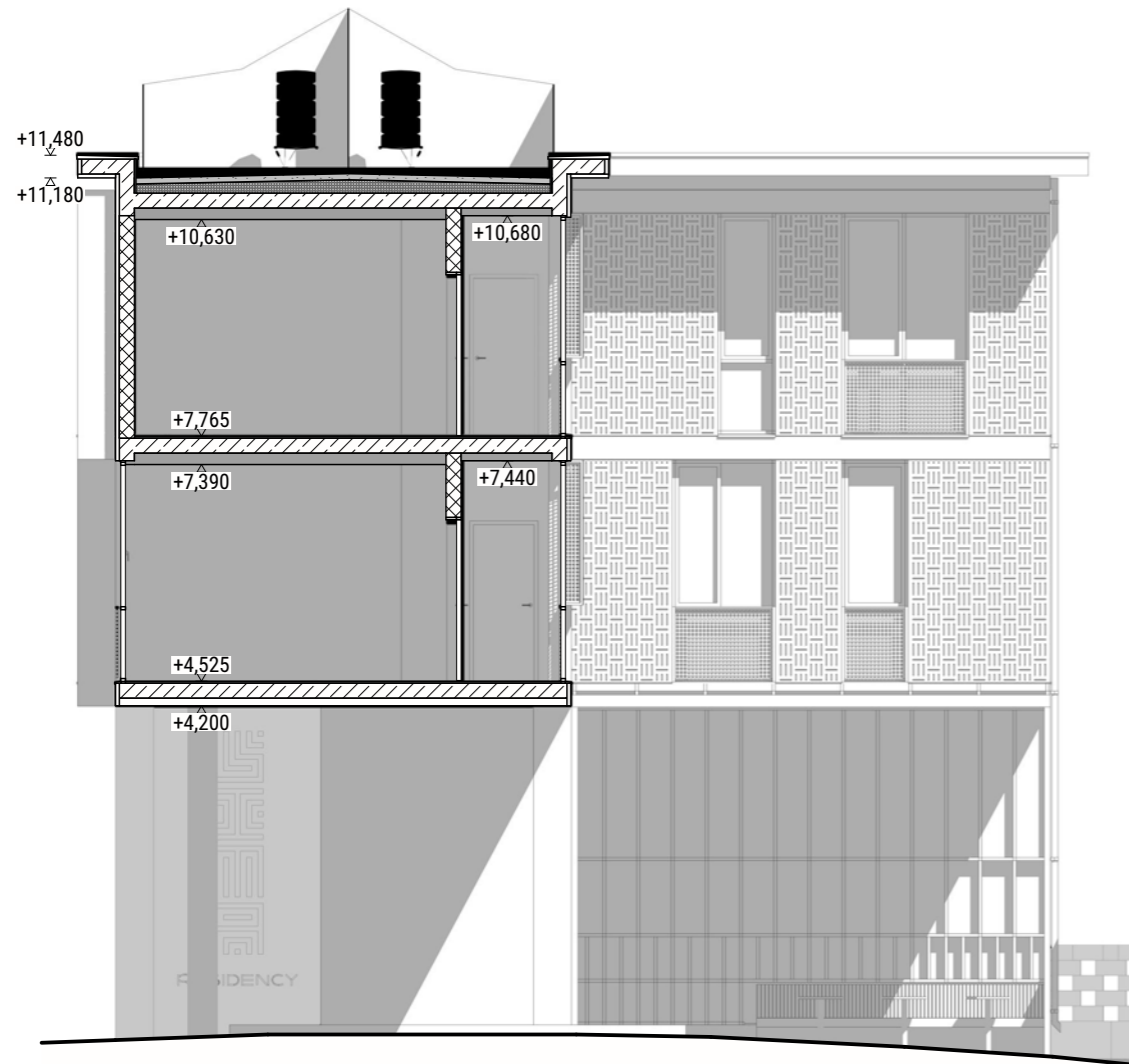
- 1. Stone slabs on anchor support system
- 2. Aluminum composite panels on supporting system
- 3. Facade concrete
- 4. Curtain wall system
- 5. Wooden facade panels
- 6. Perforated aluminum composite fencing

APARTMENTS ELEVATION 3-3



1. Stone slabs on anchor support system
2. Aluminum composite panels on supporting system
3. Facade concrete
4. Curtain wall system
5. Wooden facade panels
6. Perforated aluminum composite fencing
7. Aluminum shutters

APARTMENTS SECTIONS





RESIDENCY

RESIDENCY